

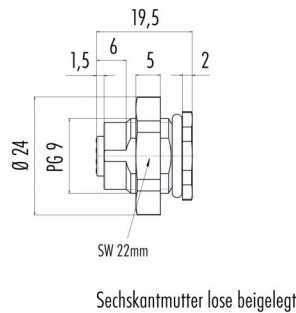
Product description **M12-A female panel mount connector, Contacts: 5, not shielded, solder, IP68, UL, PG9, front mounting**

Area **M12-A series 713**
Order number **86 4832 3002 00005**

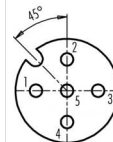
Illustration



Scale drawing



Contact arrangement (Plug-in side)



| | X | Y |
|---|-------|-------|
| 1 | -2,50 | 0,00 |
| 2 | 0,00 | 2,50 |
| 3 | 2,50 | 0,00 |
| 4 | 0,00 | -2,50 |
| 5 | 0,00 | 0,00 |

- 1 braun/brown
- 2 weiß/white
- 3 blau/blue
- 4 schwarz/black
- 5 grau/grey

Geschirmte Versionen: Schirm auf Gehäuse
Shielded versions: shield on housing

You can find the assembly instructions on the next page.

Technical data

General values

Notice

Please note that, due to the change from the old to the new order number, there may be deviations in the technical specifications. For questions about product details, please use the 'Contact Customer Service' form on the right.

Connector design
Connector locking system
Termination
Wire gauge (mm)
Wire gauge (AWG)
Upper limit temperature
Lower limit temperature
Customs tariff number
Packaging Unit

female panel mount connector
screw
solder
0.34 mm²
22
85 °C
- 40 °C
85369010
20

Cable data

Approval 1

UL

Electrical values

Rated current (40 °C)
Rated voltage
Rated impulse voltage
Pollution degree
Overvoltage category
Insulating material group
Insulation resistance
EMC compliance
Degree of protection
Mechanical operation

4 A (3 A UL)
60 V
1500 V
3
II
III
> 10⁸ Ω
not shielded
IP68
> 100 Mating cycles

Material

Contact material
Contact plating
Contact body material
Housing material
Locking material
REACH SVHC

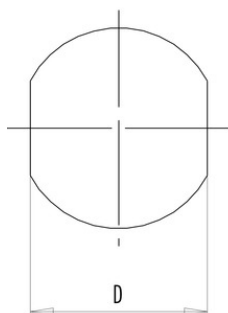
CuSn (bronze)
Au (gold)
PA
PA
plastic
CAS 7439-92-1 (Lead)

Product description **M12-A female panel mount connector, Contacts: 5, not shielded, solder, IP68, UL, PG9, front mounting**

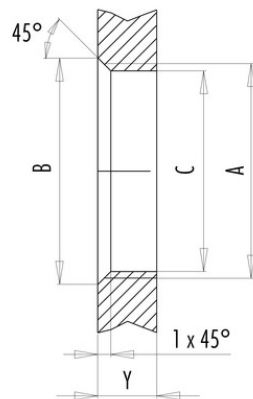
Area **M12-A series 713**
Order number **86 4832 3002 00005**

Assembly instructions / Panel cut-out

With flats as anti-rotation device



With bore hole



Installation direction:
o-ring sits on chamfer.

| Thread | Measures | | | Tightening torque | |
|-----------|----------|--------|--------|--------------------------------------|--|
| | B (mm) | C (mm) | D (mm) | Metal housing/ Positioning sleeve | Plastic housing/ Positioning sleeve |
| PG 9 | 16,2 | 15,3 | 13,5 | 1,25 Nm | 1,25 Nm |
| PG 11 | 20,2 | 18,7 | 17,0 | 2 Nm | – |
| PG 13,5 | 21,5 | 20,5 | – | 2 Nm | – |
| M12 x 0,5 | – | 12,1 | – | – | 0,4 Nm |
| M12 x 1 | – | 12,2 | – | 1 Nm | – |
| M14 x 1 | 15,2 | 14,2 | – | 1,25 Nm | – |
| M16 x 1,5 | 17,0 | 16,1 | 13,5 | 1,25 Nm | 1,25 Nm |
| M20 x 1,5 | 21,0 | 20,1 | – | 2 Nm | 1,25 Nm |

| Thickness of wall Y (mm) | | |
|------------------------------------|------------------------------------|----------|
| Version | min (mm) | max (mm) |
| Fastened from back side | 2 | 3,5 |
| Front fastened | 2 | 4,5 |
| Positioning possible ¹⁾ | 2 | 3,5 |
| Screw clamp | 2 | 3,5 |
| Thread M12 x 1 | 2 | 3,0 |
| Thread M14 x 1 ²⁾ | ³⁾ 1,5/ ⁴⁾ 2 | 6,5 |

Notes

- ¹⁾ Do not attach a chamfer
- ²⁾ Wall thickness:
use locknut 01-5385
up to 1,5 mm,
>1,5 mm cut thread
- ³⁾ Nut
- ⁴⁾ Thread in wall of housing

| | |
|---------------------|---|
| Product description | M12-A female panel mount connector, Contacts: 5, not shielded, solder, IP68, UL, PG9, front mounting |
| Area | M12-A series 713 |
| Order number | 86 4832 3002 00005 |

Security notices

The connector must not be connected or separated under load. Non-observance and incorrect use can result in personal injury.

The connectors are designed for use in plant, control system and electrical equipment. The end user is responsible for checking whether the connectors are suitable for use in other applications.

Connectors with degree of protection IP 67 and IP 68 are not suitable for use under water. When used outdoors, the connectors must be separately protected against corrosion. For further information about IP degrees of protection refer to 'Technical support' in the Download Centre.